



**Using the JNBridge JMS Adapter for BizTalk Server
with IBM WebSphere
Version 3.0**

www.jnbridge.com

Using the JMS Adapter with WebSphere

JNBridge, LLC
www.jnbridge.com

COPYRIGHT © 2008-2011 JNBridge, LLC. All rights reserved.

JNBridge is a registered trademark and JNBridgePro and the JNBridge logo are trademarks of JNBridge, LLC.

Oracle and Java are registered trademarks of Oracle and/or its affiliates.

Microsoft, Windows, Windows Vista, Windows 7, Windows 2008, Windows 2008 R2, BizTalk and the Windows logo are trademarks, or registered trademarks of Microsoft Corporation in the United States and/or other countries.

All other marks are the property of their respective owners.

Contents

Quick Config for WebSphere.....	4
Adapter Transport Handler Properties.....	4
Adapter Send or Receive Port Properties	4
Using the JMS Adapter with WebSphere	5
Resources.....	5
BizTalk Server Machine Prerequisites	5
Configuring the BizTalk Server Machine.....	6
Installing the IBM WebSphere JMS client	6
Configuring the Sun ORB.....	6
Deploy JMS Header Schema to BizTalk Application	7
Configuring the Adapter Send and Receive Transport Handlers.....	7
JMS Properties Category	7
JNBridge Properties Category.....	9
Security Properties Category	9
Configuring Send Ports and Receive Locations	10
Configuring Send Ports.....	10
Connection Properties Category	10
JMS Operation Properties Category	10
Configuring Receive Ports and Locations.....	11
Connection Properties Category	11
JMS Operation Properties Category	11
JNDI Names	13

Quick Config for WebSphere

Adapter Transport Handler Properties

- Initial Context Factory: `com.ibm.websphere.naming.WsnInitialContextFactory`
- JMS Scheme: `iiop`
- Queue Connection Factory:
No connection factories are pre-configured in WebSphere.
- Topic Connection Factory:
No connection factories are pre-configured in WebSphere.
- Class Path
Using IBM JRE: `sibc.jndi.jar, sibc.jms.jar`
Using Sun JRE: `sibc.jndi.jar, sibc.jms.jar, sibc.orb.jar`
- JVM Path (examples)
Using IBM JRE: `C:\Program Files\IBM\WebSphere\AppServer\java\jre\bin\j9vm\jvm.dll`
Using Sun JRE: `C:\Program Files\Java\jre1.5.0_15\bin\client\jvm.dll`

Adapter Send or Receive Port Properties

- Port Number: `2809`
- JMS Object Name
No destinations are pre-configured in WebSphere.

Using the JMS Adapter with WebSphere

This document demonstrates connecting the JNBridge JMS Adapter for BizTalk Server to the IBM WebSphere Application Server 6.1. The configuration discussed here is also applicable to later WebSphere releases. Within WebSphere, the underlying JMS service can be provided by the default messaging provider bundled with WebSphere or an external WebSphere MQ implementation. In either case, the adapter configuration and connection properties would be similar.

WebSphere 6.1 does not come with a pre-configured JMS provider. It is necessary to configure the service using the default messaging provider or MQ. This document assumes some passing familiarity with enterprise Java such as JNDI contexts, factories and general connection requirements and parameters. This document also assumes that the BizTalk developer has access to particular information peculiar to the target WebSphere JMS implementation. Finally, this document assumes that the reader is knowledgeable and experienced with BizTalk Server.

Resources

- The user guide, *Using the JNBridge JMS Adapter for BizTalk Server*.
- Chances are, if the target WebSphere JMS implementation is mature, the values for the configuration of BizTalk transport handlers and send/receive ports can be supplied by the WebSphere administrator, gleaned from existing Java JMS client code or property files, e.g. *jndi.properties*.
- This link is IBM documentation providing an overview and download of the stand-alone [WebSphere JMS client](#) required by the JMS adapter. This link provides information about [installing and configuring](#) the stand-alone client.

BizTalk Server Machine Prerequisites

The following prerequisites are needed for the adapter.

- The stand-alone WebSphere client can use either the IBM Java Run-time Environment (JRE) or the Sun JRE. The IBM JRE ships with WebSphere 6.1. It can also be obtained by downloading the [IBM Eclipse Development](#) environment. Please contact IBM for additional licensing information regarding the IBM JRE. The Sun JRE can be downloaded from the Sun website. Regardless of which JRE is used, it must be present on the BizTalk machine. Supported JRE versions are Java 5 (1.5) and 6 (1.6). Java 4 (1.4) is not supported.

Using the JMS Adapter with WebSphere

Configuring the BizTalk Server Machine

Installing the IBM WebSphere JMS client

The JNBridge JMS Adapter for BizTalk uses the WebSphere stand-alone JMS environment supplied by IBM (see *BizTalk Server Machine Prerequisites*). This JMS client can be downloaded as a single JAR file, `sibc_install-<version>.jar`, from the IBM website.

If the IBM JRE is being used, you must install the environment by executing this command:

```
java -jar sibc_install-<version>.jar jms_jndi_ibm [InstallDir]
```

If the Sun JRE is being used, use this command line:

```
java -jar sibc_install-<version>.jar jms_jndi_sun [InstallDir]
```

The installation supporting the IBM JRE will result in two JAR files, `sibc.jndi.jar` and `sibc.jms.jar`, being installed in `[InstallDir]\lib`. The installation supporting the Sun JRE will add a third JAR file, `sibc.orb.jar`.

Configuring the Sun ORB

If the Sun JRE is being used, then a required J2EE system property configuring the Sun Object Request Broker (ORB) must be supplied to the Sun JVM. If the IBM JRE is being used, skip this configuration step. Arguments are passed to the Sun JVM by the adapter using the Transport Handler Property JVM Arguments. Put this argument in the property JVM Arguments (see Figure 1).

```
-Dcom.ibm.CORBA.ORBInit=com.ibm.ws.sib.client.ORB
```

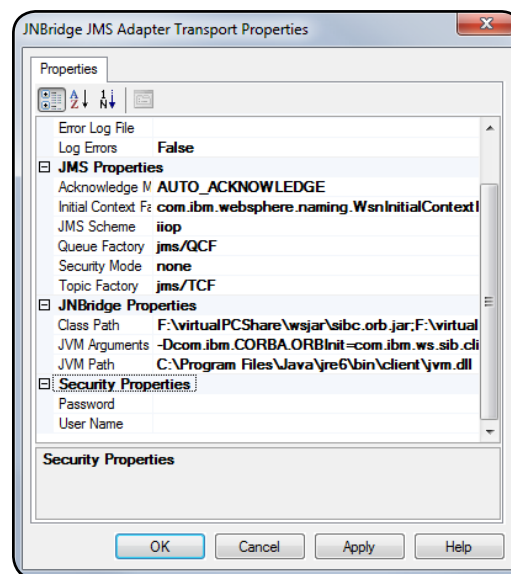


Figure 1. Configuring the Sun ORB using the JVM Arguments property

Deploy JMS Header Schema to BizTalk Application

In order to properly handle JMS header properties within BizTalk, you must deploy the assembly, `JNBridgeBTS2006JMSProperties.dll`, to your BizTalk application. This assembly contains the XSD namespaces and schemas used by the JNBridge JMS Adapter to promote JMS header properties within messages stored in the BizTalk Message Box.

! *Deploying this assembly is mandatory.*

■ To deploy the schema assembly

- 1 Open up the BizTalk Administrator and open your BizTalk application in the left-side tree view.
- 2 Right click on the application's root node and choose **Add ► Resources**. This opens the **Add Resources** dialog.
- 3 In the dialog, click on the **Add** button and navigate to the schema DLL in the adapter install directory, e.g. `C:\Program Files\JNBridge\JMSAdapters\BTS2006\bin\JNBridgeBTS2006JMSProperties.dll`.
- 4 Click on **OK** to close the **Add Resources** dialog.
- 5 Open the **Schemas** folder in your application. You should see the three schemas: `JMSSendProperty.SendPropertySchema`, `JMSRecvProperty.RecvPropertySchema` and `JMSConfProperty.ConfPropertySchema`.
- 6 Restart the host instance and application.

Configuring the Adapter Send and Receive Transport Handlers

The transport handler property grids for the Send and Receive sides contain properties global to all send or receive ports configured to use the JNBridge JMS Adapter and that reside in the same BTS host instance. In other words, all JMS Adapter send or receive ports in the BTS host instance will inherit these transport properties. You must configure send handler transport properties in order to produce messages to queues and topics. Likewise, you must configure receive handler transport properties in order to consume messages from queues and topics. In most cases, the values of the properties will be identical between the send and receive handlers; however, depending on the JMS server implementation, they may be different.

JMS Properties Category

The JMS Properties category are properties used to properly connect to a JMS server.

■ JMS Acknowledge Mode

Using the JMS Adapter with WebSphere

The Acknowledge Mode is a drop-down list containing the JMS specification that determines how a JMS client and server institute a reliable messaging protocol. The choices are `AUTO_ACKNOWLEDGE`, `CLIENT_ACKNOWLEDGE` and `DUPS_OK_ACKNOWLEDGE`. Regardless of the choice, the JNBridge JMS Adapter will correctly implement the protocol. For the WebSphere JMS service, `AUTO_ACKNOWLEDGE` is the default configuration.

■ Initial Context Factory

This is a text-editable field containing the name of the JNDI initial context factory. The initial context factory is a JNDI class used to locate and instance factories and JMS destinations. The default initial context factory for WebSphere is:

`com.ibm.websphere.naming.WsnInitialContextFactory`

! *Factory names are case sensitive—be sure the name (including the complete namespace, if necessary) is typed correctly.*

■ JMS Scheme

This is a text-editable field. The JMS Scheme or *Protocol* is particular to each vendor's RMI implementation. The protocol is part of the URI used to connect to the JMS service.

For WebSphere, the scheme is:

`iiop`.

■ JMS Security Mode

The JMS Security Mode is a drop-down list that specifies the type of security required by the JMS server implementation. The choices are none, simple and strong. If the choice is simple, then the server expects a user name and password. If the choice is strong, then the server expects a digital certificate security strategy, usually based on the X.509 standard.

! *If the JMS server implements simple security, it is not necessary to configure this property. Enter a user name and password—the JNBridge JMS Adapter will automatically switch to the simple security mode.*

■ Queue Connection Factory

This is a text-editable field. There are no pre-configured, default connection factories in WebSphere.

! *This value includes the JNDI directory path to the connection factory. The complete JNDI path must be provided.*

Using the JMS Adapter with WebSphere

■ Topic Connection Factory

This is a text-editable field. There are no pre-configured, default connection factories in WebSphere.

! *This value includes the JNDI directory path to the connection factory. The complete JNDI path must be provided.*

JNBridge Properties Category

The JNBridge Properties Category correctly configure the .NET-to-Java interoperability core components.

■ Class Path

The Java class path is a set of semicolon-separated paths to the JAR or class files required for a JMS client installation. The class path is used by the JNBridge Java and .NET interoperability components to locate the JMS and JNDI client Java classes so they can be instantiated in the Java Virtual Machine.

To edit the class path, click in the field to enable the browse button. Click on the button to launch the Edit Class Path dialog. Note that only checked elements will be added to the class path when the dialog is dismissed.

The jar files required by the JMS adapter are: `sibc.jndi.jar`, `sibc.jms.jar` and, if the Sun JRE is used, `sibc.orb.jar`.

■ JVM Path

The JVM Path property is the absolute path to the Java Virtual Machine implementation, [jvm.dll](#). To edit the JVM Path property, click in the field to enable the browse button. Click on the button to launch the standard File Open dialog. Navigate to `jvm.dll` and click OK. Please see the section *Quick Config for WebSphere 6.1* for information regarding using the Sun or IBM JRE and which JVM to use.

Security Properties Category

This category provides security credentials necessary to connect to a JMS server, if the JMS implementation supports security mode simple.

■ Password

Click in this field to drop-down the password edit field. Type in the password.

■ User Name

This is a text editable field. Enter the user name necessary to connect to the JMS server.

Configuring Send Ports and Receive Locations

Configuring Send Ports

Connection Properties Category

These properties determine where the JMS server resides and the port number where it is listening for connections.

- Host Name

This is a text-editable field. Enter the name or IP address of the machine hosting the JMS server.

- Port Number

This is a text-editable field. Enter the port number on which the JMS server is accepting connections. For WebSphere, this port is usually, by default, **2809**.

JMS Operation Properties Category

These properties determine what operation the send port will enable.

- JMS Object Name

This is a text-editable field. Enter the JNDI name bound to the JMS queue or topic. For example, a complete JNDI name for a queue or topic could be:

```
myQ  
west_coast/jms/partnerTopic
```

- JMS Object Type

This is a drop-down list containing two values: Queue or Topic.

- Message Type

This is a drop-down list containing the values: Text, Text UTF, Text ISO-8859-15 or Bytes. If Text is chosen, then the JNBridge JMS Adapter will send a JMS Text Message. Because a JMS Text Message is by definition UTF-16 BE, the types Text UTF and Text ISO-8859-15 ensure that the string which is the payload of the JMS message is correctly encoded from the binary representation in the BizTalk Message Box. If the type Text is chosen, then the binary representation is considered UTF-8. If Bytes is chosen, then the JNBridge JMS Adapter will send a JMS Bytes Message.

Configuring Receive Ports and Locations

Connection Properties Category

These properties determine where the JMS server resides and the port number where it is listening for connections.

- **Host Name**

This is a text-editable field. Enter the name or IP address of the machine hosting the JMS server.

- **Port Number**

This is a text-editable field. Enter the port number on which the JMS server is accepting connections. For WebSphere, this port is usually, by default, **2809**.

JMS Operation Properties Category

These properties determine what operation type of operation the send port will enable.

- **JMS Object Name**

This is a text-editable field. Enter the JNDI name bound to the JMS queue or topic. For WebSphere 6.1, the example topic is at:

```
myQ  
west_coast/jms/partnerTopic
```

- **JMS Object Type**

This is a drop-down list containing two values: Queue or Topic.

- **Message Type**

This is a drop-down list containing the values: Text, Text UTF-8, Text UTF-16, Text ISO-8859-15, Bytes or Map. If Text is chosen, then the JNBridge JMS Adapter expects to receive a JMS Text Message. If Bytes is chosen, then the JNBridge JMS Adapter expects to receive a JMS Bytes Message. If Map is chosen, then the JNBridge JMS Adapter expects to receive a JMS Map Message. Because a JMS Text Message by definition contains UTF-16 BE text, the types Text UTF-8, Text UTF-16 and Text ISO-8859-15 ensure that the text in the body of the message is encoded correctly to binary for submittal to the BizTalk Message Box. The type Text without a qualifier means UTF-8.

- **Client ID**

This is a unique string that identifies the receive port connection to WebSphere. It is only used if durable subscriptions are enabled.

Using the JMS Adapter with WebSphere

■ Durable Subscription Name

Durable subscriptions are particular to topics only. A durable subscription for a topic allows consumers to register a name with the JMS server such that whenever a receive port is active, all messages in the topic will be received. In this way, a receive port does not have to be continually connected to receive messages from a topic. A receive port that does not use durable subscriptions must be active and connected in order to subscribe to a topic—any messages published by the topic while a nondurable receive port is not active will not be available to that receive port when it becomes active. This is a text-editable field. Enter the durable subscription name.

■ Message Selector Filter

Message selectors are used by receive ports to filter or select messages from topics and queues based on JMS and custom message header properties.

This is a text-editable field. Enter in a selector expression. The expression is derived from a subset of the SQL92 standard.

JNDI Names

Figure 2 shows the WebSphere 6.1 Integrated Solutions Console. The console is displaying the configured JMS queues. Note that there are two configured queues, one each for two different JMS providers. The queue, `test_Q`, is created under the default messaging provider (the JMS implementation that comes with WebSphere) and has the JNDI name, `myQ`. The queue, `MQ_Q`, is provided by MQSeries and has the JNDI name, `myMQ_Q`.

It is important to use complete JNDI paths, either forward slash ('/') or dot('.') delineated, for connection factories and JMS destinations.

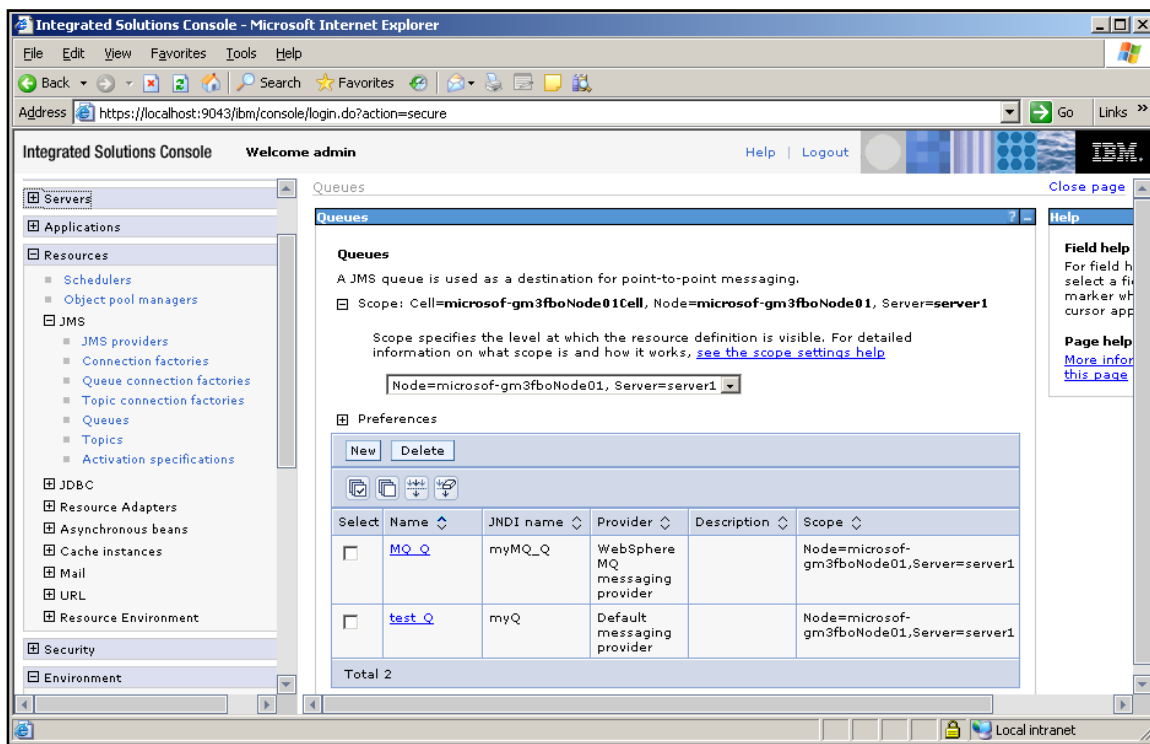


Figure 2. The JNDI names