

BRIDGE Java & .NET

JNBridgePro

Access *anything* .NET from Java Access *anything* Java from .NET *Anywhere*

JNBridgePro™ simplifies Java & .NET interoperability by flawlessly connecting anything Java® to anything Microsoft® .NET, whether the Java and .NET components are running in the same process, across a network, or in the cloud. JNBridgePro's high-performance bridging architecture removes the complexities of cross-platform interop so you can generate integrated solutions quickly and easily.

Bridging that Scales from In-Process to Cloud

With JNBridgePro's flexible architecture your Java and .NET endpoints can be anywhere: in the cloud or on the ground. You can build applications that run on the same machine in the same process via shared memory, on the same machine but in different processes via TCP/binary, over any network via TCP/binary, or over the Internet via HTTP/SOAP. Need to change the application's architecture? All it takes is a simple change to a configuration file; your code remains untouched.

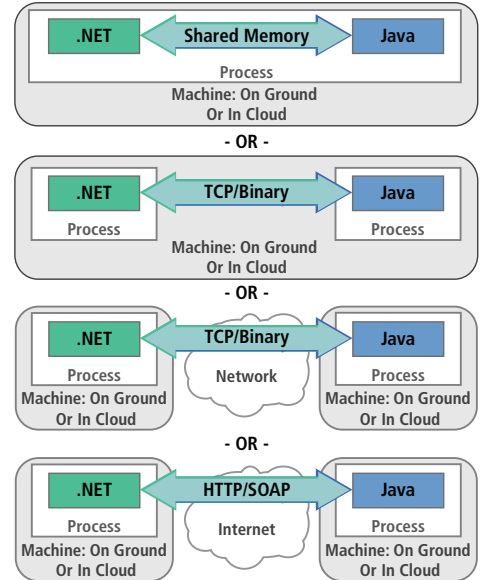
Bridge Anything Java to .NET Bridge Anything .NET to Java

JNBridgePro enables you to join anything Java together with anything .NET across the platform boundary.

At the object or class level, anything includes objects, classes, user interface components, instance members, static members, fields, properties, methods, generics, and enums.

On the Java side, anything includes Java SE, Java EE and all the leading Java EE application servers, EJBs, JMS, JNDI, AWT, SWT, Swing, and standalone JVMs.

On the .NET side, anything includes .NET rich-client GUIs, WPF, WinForms, ASP.NET, Microsoft's BizTalk Server and SharePoint Server.



Scale from In-Process to Cross-Network or to the Cloud

When to use JNBridgePro

Do you require high-performance, rich interop?
JNBridgePro is orders of magnitude faster than web services, and works where your APIs are not or cannot be services-enabled.

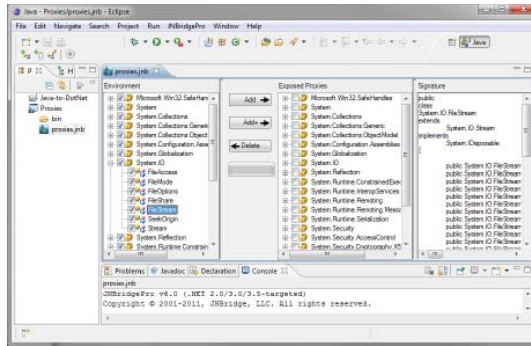
Do you need to migrate to the other platform?
JNBridgePro enables you to use any existing Java or .NET-based binaries on the other platform, with no need to access or touch the original source code.

Do you need transactions?
JNBridgePro supports cross-platform transactions with 2-phase commit.

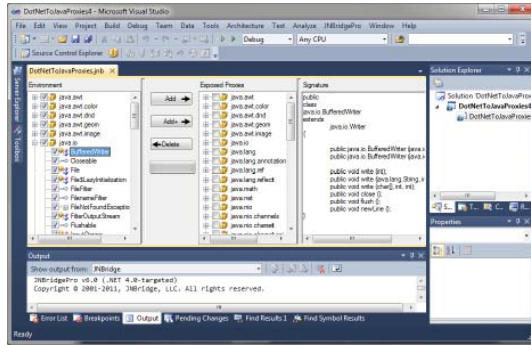
Do you need to full access to cloud-based APIs from the other framework?
JNBridgePro allows you to APIs from other frameworks anywhere: on the ground or in the cloud.



SPANNING JAVA & .NET



Eclipse Plug-in



Visual Studio Plug-in

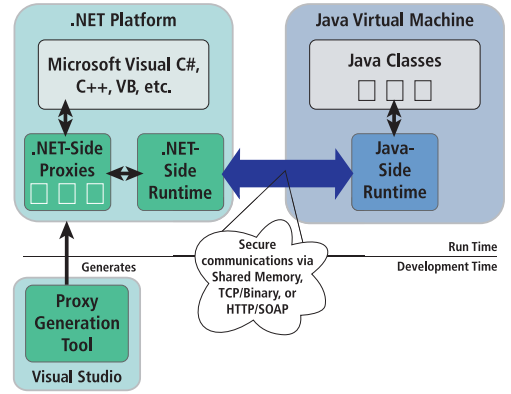
JNBridgePro Features

- Plug-ins for Eclipse™ and Visual Studio®.
- Bi-directional, high-performance Java & .NET interoperability.
- Access Java classes from .NET as though Java were a .NET language.
- Access .NET classes from Java as though they were Java classes.
- Access anything across the platform boundary, including objects, classes, instance members, static members, fields, properties, methods, generics, and enums.
- Full class access includes support for callbacks, pass by reference or by value, and cross-platform exception handling.
- Embed AWT or Swing Java widgets in .NET WinForm or WPF applications.
- Embed .NET WinForm or WPF controls in Java AWT, SWT, or Swing apps.
- Cross-platform transactions with 2-phase commit.
- Expose any Java and .NET binaries. No source code necessary.
- Access Java SE or Java EE and all the leading Java EE application servers.

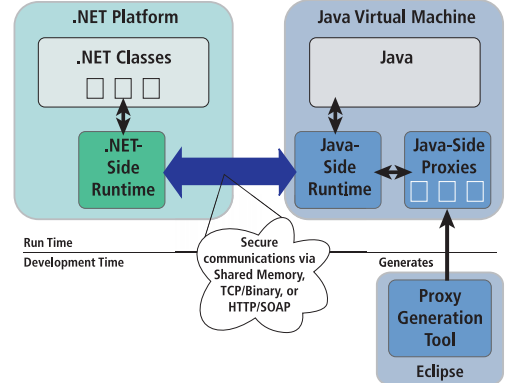
Cross-Platform Magic

JNBridgePro makes the incompatible compatible so you don't have to. JNBridgePro provides cross-platform exception handling, integrated object lifecycle management, garbage collection, datatype conversions, marshalling and unmarshalling of arguments, and management of references and communications.

.NET to Java



Java to .NET



JNBridgePro Supports

- .NET Framework 2.0 through 4.0
- JDK or JRE 1.3.1 through Java SE 7
- Eclipse 3.2 - 3.6 (Eclipse plug-in)
- Visual Studio 2005, 2008, or 2010 (Visual Studio plug-in)
- x86 and x64 versions of Windows 7, Windows Vista, Windows XP, or Windows Server 2003 or 2008



Download a free, full-featured evaluation at www.jnbridge.com

jnbridge.com

Copyright © 2011 JNBridge, LLC. All rights reserved. JNBridge is a registered trademark and JNBridgePro and the JNBridge logo are trademarks of JNBridge, LLC. Java is a registered trademark of Oracle and/or its affiliates. Microsoft, Visual Studio, the Visual Studio logo, BizTalk, Windows, and other Microsoft product names are trademarks or registered trademarks of Microsoft Corporation in the United States and other countries. Eclipse and Eclipse Ready are the trademarks of Eclipse Foundation, Inc. Other terms and product names may be trademarks or registered trademarks of their respective owners and are hereby acknowledged.