

CONNECT JMS & BizTalk Server

JNBridge JMS Adapter for BizTalk Server

Do you need to integrate BizTalk Server with a JMS (Java Messaging Service) infrastructure?

The JNBridge JMS Adapter for BizTalk Server provides a seamless way to connect JMS capabilities with Microsoft BizTalk Server 2006 or Microsoft BizTalk Server 2006 R2.

With the adapter, you can quickly and easily integrate BizTalk Server into any existing JMS infrastructure.

Fast and easy-to-use

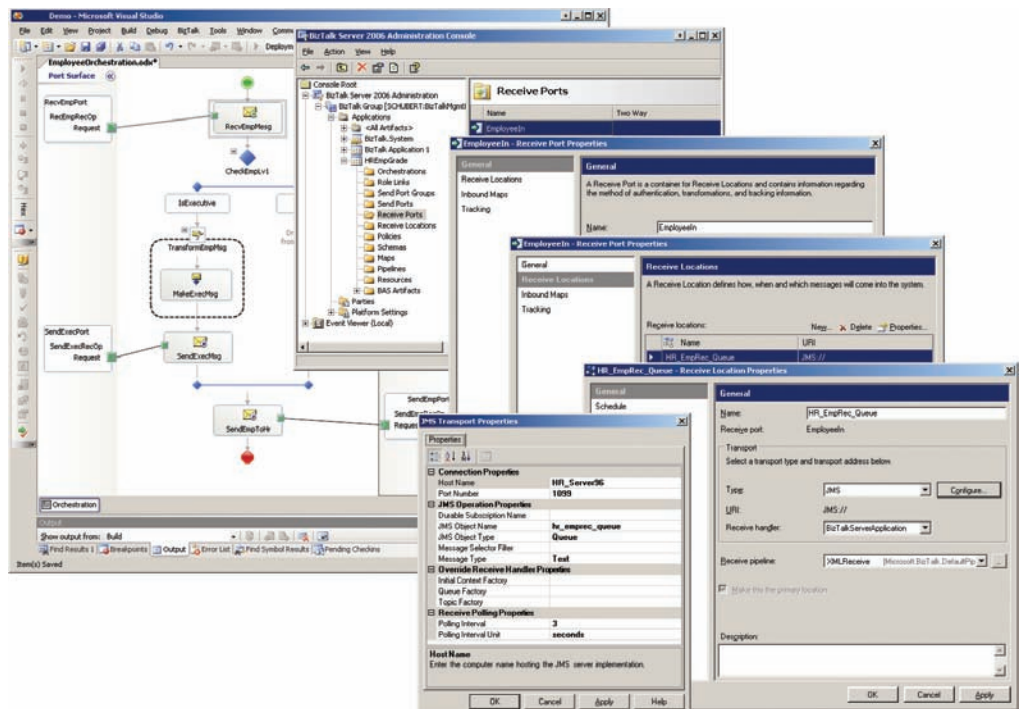
The JNBridge JMS Adapter for BizTalk Server quickly connects BizTalk Server orchestrations to JMS infrastructure. The adapter:

- Requires *absolutely no change* to your existing JMS enterprise server.
- Is fast and easy-to-use. The adapter requires *no specific knowledge* beyond the ability to code BizTalk orchestrations and configure a BizTalk Server.
- Works with *any vendor's* JMS server.



Detailed Features

- Bind send/receive ports to JMS queues and topics.
- Accommodates:
 - Text messages, byte messages
 - Point-to-point messaging (queues) and publish/subscribe (topics)
 - Durable subscriptions
 - Message selectors/filters
 - JMS header properties
- Based on the dependable and robust JNBridgePro Java and .NET interop technology.
- Leaves your JMS server untouched.





SPANNING JAVA & .NET



How it works

The JNBridge JMS Adapter for BizTalk Server is an implementation of the BizTalk Adapter Framework that encapsulates the JMS (Java Message Service) client capabilities into a standard BizTalk adapter.

As part of the deployment of a BizTalk Server orchestration, the adapter can be configured as endpoints bound to send and receive ports, allowing the BizTalk orchestration to produce and consume messages to and from JMS queues and topics.

The binding configures the ports to connect to specific JMS queues and topics on a specific JMS server.

Once the configuration and binding is completed, the orchestration is started. Any document directed to a send port bound to the adapter will be sent to the corresponding JMS queue or topic as a JMS message. Any JMS message appearing on a queue or topic bound to a receive port will be received from that queue or topic and enter the orchestration as a document at that receive port.

System Requirements

- Microsoft .NET Framework 2.0 or above
- JRE (Java SE Runtime Environment) 1.4 or above
- JMS 1.1 compliant installation, including all JAR files
- BizTalk Server 2006 or BizTalk Server 2006 R2

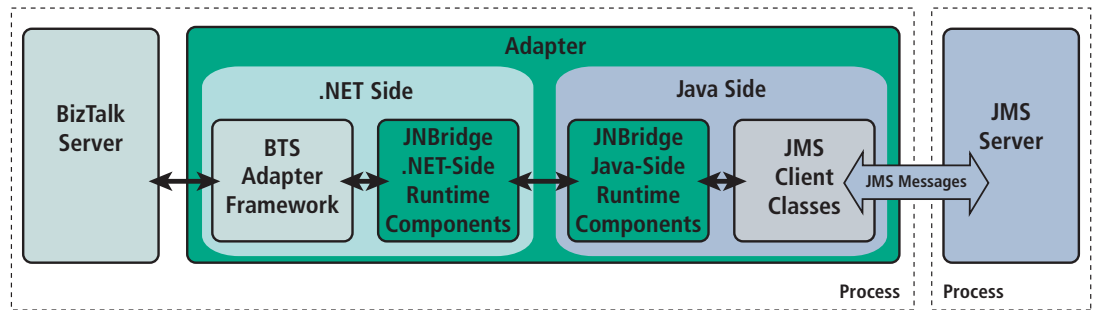
Supported Operating Systems

- Windows Vista
- Windows XP Professional with SP2
- Windows Server 2003 with SP1
- Windows Server 2000 with SP4 or above

Supported JMS Servers

Works with any vendor's JMS server, including: BEA WebLogic, IBM WebSphere MQ, OpenJMS, Oracle Enterprise Messaging Service (OEMS), Pramati JMS Server, SonicMQ, Sun ONE Message Queue, and TIBCO EMS.

JNBridge JMS Adapter for BizTalk



The underlying technology that supports any JMS implementation is JNBridgePro, JNBridge's Java and .NET interoperability product. JNBridgePro can be used to access any Java API from .NET, or any .NET API from Java. The JMS adapters implement JNBridgePro's interoperability technology to access the JMS API automatically for you; you don't need any knowledge of JMS to use the adapter.

The above figure shows the architecture of the JMS Adapter for BizTalk Server.

The adapter contains both a .NET side running in a CLR and a Java side running in a JVM, where the CLR and the JVM are running in the same process. JNBridgePro manages interplatform communications. The JMS client classes are those provided by the vendor, which guarantees that the adapter will work with any vendor's JMS server. The adapter utilizes the BizTalk Adapter Framework to communicate with the BizTalk Server.

Download a free, full-featured evaluation at www.jnbridge.com



jnbridge.com