

# CONNECT JMS & .NET

## JNBridge JMS Adapter for .NET

The JNBridge JMS Adapter for .NET provides seamless integration of JMS (Java Message Service) capabilities into Microsoft .NET applications.

With the adapter, you can quickly and easily create custom .NET applications that can send messages to, and receive messages from, an existing JMS infrastructure.

The JNBridge JMS Adapter for .NET:

- Requires *absolutely no change* to your existing JMS enterprise server.
- Does not require your JMS to explicitly support .NET — it requires only the standard Java client.
- Works with *any* vendor's JMS server, including BEA WebLogic, IBM WebSphere MQ, OpenJMS, Oracle Enterprise Messaging Service (OEMS), Pramati JMS Server, SonicMQ, Sun ONE Message Queue, and TIBCO EMS.
- Works with *any* custom .NET application or any Microsoft program that can consume a WCF (Windows Communication Foundation) end point, such as Microsoft Office SharePoint Server 2007.

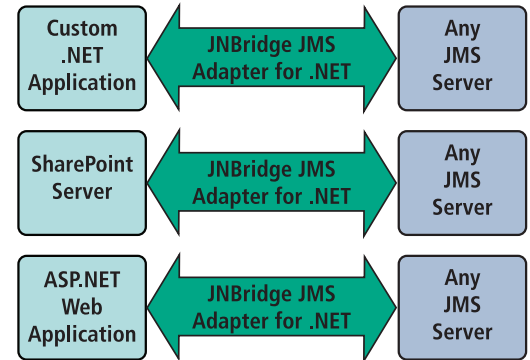
### Fast and easy-to-use

The adapter presents a simple send/receive interface using standard data types requiring no specific knowledge beyond the ability to code C# or VB.NET.

When integrated into a custom .NET solution using the Visual Studio 2005 or Visual Studio 2008 design-time code generation capabilities, you can browse existing JMS enterprise servers and select supported operations, automatically generating easy-to-use classes.

### Primary Features

- Works with any vendor's JMS server.
- Fast to implement, simple to use.



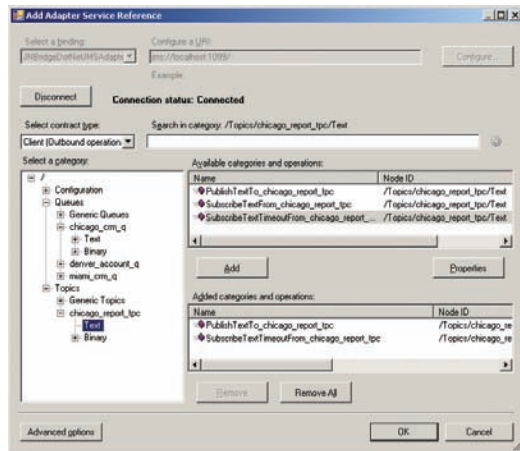
- Directly consume the adapter in a custom .NET application, or in any application that can consume a WCF endpoint.
- Directly consume the adapter in an application, or use the adapter to implement a hosted WCF service.

### Detailed Features

- Send and receive messages.
- Support for multiple types of receive, including:
  - Blocking receive
  - Blocking receive with timeout
  - .NET-style asynchronous receive
  - Inbound (hosted service) receive
- Accommodates:
  - Text messages, byte messages, map messages
  - Point-to-point messaging (queues) and publish/subscribe (topics)
  - Durable subscriptions
  - Message selectors/filters
  - JMS header properties
- Explore available queues and topics with the design tool.
- Based on the dependable and robust JNBridgePro Java and .NET interop technology.
- Expects no programming knowledge of JMS.
- Leaves your JMS server untouched.



SPANNING JAVA & .NET



### How it works

At design time, the JNBridge JMS Adapter for .NET uses a simple Visual Studio plug-in interface to provide integration and configuration information. With this Add Adapter Service Reference plug-in, you can explore the available JMS queues and topics, select the send and receive operations to be performed, and select the optional queues and topics to be accessed. You can choose specific send and receive operations particular to the queues and topics found on any JMS implementation.

The plug-in will then generate an API class containing the selected JMS operations and their queue and topic destinations. You can then use that API to send and receive messages in the .NET application you're developing.

The resulting application will send messages to, and receive messages from, the indicated JMS server using simple .NET data types. The adapter supports both blocking and non-blocking (asynchronous) receive operations.

The underlying technology that supports any JMS implementation is JNBridgePro, JNBridge's Java

### System Requirements

- Microsoft .NET Framework 3.0 or above
- JRE (Java SE Runtime Environment) 1.4 or above
- JMS 1.1 compliant installation, including all JAR files
- Visual Studio 2005 SP1 or above, or Visual Studio 2008

### Supported Operating Systems

- Windows Vista
- Windows XP Professional with SP2
- Windows Server 2003 with SP1

Optimized for

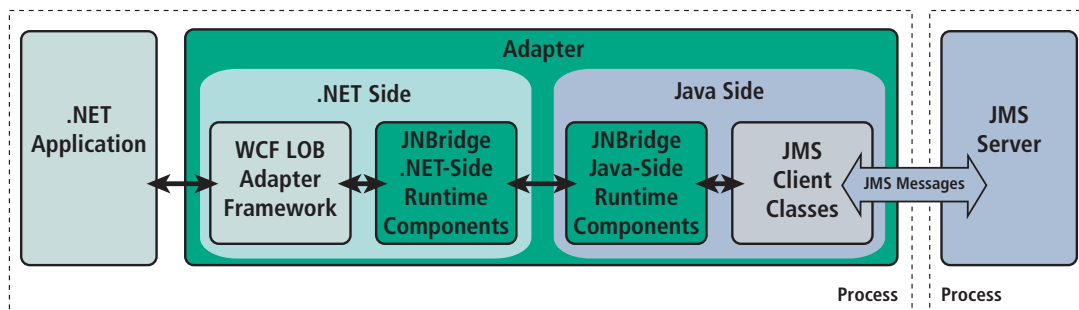


and .NET interoperability product. JNBridgePro can be used to access any Java API from .NET, or any .NET API from Java. The JMS adapters implement JNBridgePro's interoperability technology to access the JMS API automatically for you; you don't need any knowledge of JMS to use the adapter.

The figure below shows the architecture of the JMS Adapter for .NET.

The adapter contains both a .NET side running in a CLR and a Java side running in a JVM, where the CLR and the JVM are running in the same process. JNBridgePro manages inter-platform communications. The JMS client classes are those provided by the vendor, which guarantees that the adapter will work with any vendor's JMS server. The framework code that interfaces with your .NET application is Microsoft's WCF Line-of-Business Adapter framework.

### JNBridge JMS Adapter for .NET



Download a free, full-featured evaluation at [www.jnbridge.com](http://www.jnbridge.com)



[jnbridge.com](http://jnbridge.com)