

Challenge

Quickly integrate Microsoft C# and ASP.NET with an existing third-party IBM WebSphere J2EE application.

Solution

Use JNBridgePro to quickly implement the necessary interoperability. While a small component of the overall application, the interoperability project was a critical portion of a major effort.

Results

Financialware was able to successfully create a high-performance interoperability path between their existing .NET code and a partner's existing J2EE application within a very short timeframe.

■ ■ ■ ■ ■

“The JNBridge interoperability solution solved a critical .NET to J2EE integration problem we were faced with deep in the development cycle of a mission-critical application. JNBridgePro allowed us to quickly respond with a platform-agnostic solution, solving a critical business requirement and generating a positive ROI.”

***- Bill Craun
CTO, Financialware***

JNBRIDGEPRO CASE STUDY

Financialware Uses JNBridgePro to Interoperate C# and ASP.NET with a Partner's J2EE Application

Financialware delivers flexible and modular image integration solutions that help financial institutions leverage existing business infrastructure to deliver secure access to check, report and document content. Financialware needed to interoperate with a strategic business partner's existing J2EE application to drive new business. The application needed to be completed in a very short time and was required to provide excellent performance. **JNBridgePro** was chosen as the Java/.NET interoperability solution over other interoperability packages.

Challenge

As part of a partnering agreement, Financialware needed to create a high-performance .NET to Java interoperability bridge within a very short timeframe. Financialware's existing code included C# and ASP.NET applications. The integration to the partner's IBM WebSphere J2EE application needed to be seamless and perform to the expectations set by other high-volume transactional protocols. The solution also needed to be easy to implement and inexpensive to maintain.

Evaluation

A search was undertaken interoperability solutions. The evaluation criteria included:

- Ease of Use
- Feature Completeness
- Speed of Resulting Solution
- Time to Market

Financialware created a 'spike POC' for the evaluation of JNBridgePro. A spike Proof-of-Concept is a narrow, complete end-to-end implementation that traverses through all layers of the software that are to be used in the final application. In this case, the spike POC connected the C# and ASP.NET front end applications to the backend J2EE application server via the JNBridgePro generated proxies. The evaluation went very smoothly and was completed in two days. "The JNBridge technical support staff was very helpful in answering the minor questions we had during our evaluation. In fact, Financialware was able to demonstrate a fully functional application to senior management and our partner within a week" said Bill Craun of Financialware.

Implementation

The resulting solution includes Microsoft C#, Microsoft ASP.NET, Microsoft SQL Server, IBM WebSphere, and an Oracle Database. JNBridgePro is used to connect the C# and ASP.NET to the IBM

“We were able to demonstrate a fully functional application to senior management and our partner within a week.”

**- Bill Craun
CTO, Financialware**



JNBridge, LLC
3024 Jefferson St.
Boulder, CO 80304 USA
Tel: (+01) 303.545.9371
info@jnbridge.com
www.jnbridge.com

Financialware®

Financialware
12800 N. Meridian Street, Suite 150
Carmel, IN 46032
Tel: (+01) 800-873-7373
information@financialware.com
www.financialware.com

Copyright © 2004 JNBridge, LLC. All rights reserved. JNBridge and JNBridgePro are trademarks of JNBridge, LLC. Financialware is a trademark of Financialware, Inc. All other products are the trademarks or registered trademarks of their respective owners.

WebSphere J2EE Server. The J2EE backend performs authentication with the communication taking place over the partner’s secure extranet. JNBridgePro provides an interoperability path between C# components in an ASP.NET server and the partner’s Java libraries for authentication during the request. The basic architecture is shown in Figure 1. There are currently over 100 users of the system and that number is expect to grow in the future.

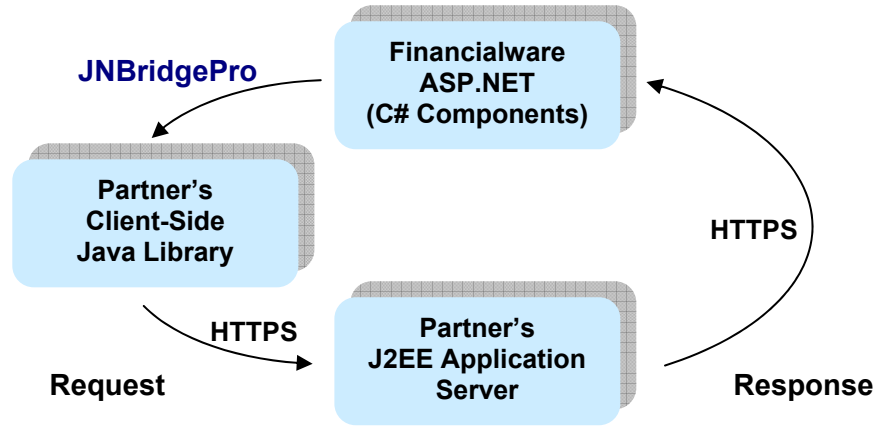


Figure 1. Basic Architecture

“One of the best things about our interoperability solution was that JNBridgePro made it a very quick and small project.” said Bill Craun of Financialware. “The interoperability project was a small, but critical, portion of a major effort. Without JNBridgePro, we could have never made the progress we did in such a short time.”

Conclusion

“The speed, stability, and reliability of JNBridgePro are top notch. None of these factors have surfaced as issues during our extensive use of the product. Our usage of JNBridgePro software saved Financialware significant engineering research and development costs which translate to significant cost savings and high ROI. We are happy and, frankly, our customers aren’t aware of the technical gymnastics we are doing under the covers” said Bill Craun.

About JNBridge

JNBridge supplies software developers with a full line of Java/.NET interoperability tools that enable fast and seamless integration of pure Java code with Microsoft .NET components and applications. JNBridgePro offers full two-way interoperability between Java and .NET with an easy to use proxy generating tool. JNBridge’s customers include ISVs, system integrators, financial institutions, healthcare solution providers, and call centers.

About Financialware

Financialware delivers a broad range of check, document, image, and report management solutions to financial institutions nationwide. For over 18 years, Financialware has been helping financial institutions with technology solutions for report storage and retrieval, image and email statements, document imaging and workflow, transaction research and integration solutions.